

# PIE FRD04-AUX MICROPROCESSOR CHIP UPGRADE

Please read instructions carefully before starting this upgrade.

**Warning:** Before you begin the supplied IC chip is static sensitive and care should be taken not to create any condition that could create a static discharge. Program memory can be erased by a severe static discharge.

## INSTRUCTIONS:

### 1. REMOVE MICROPROCESSOR CHIP

Open the protocol converter by unclipping the top from the bottom. Carefully separate the front case from the rear case. Care should be taken when separating the two case halves so that you do not break the tabs. Once separated, you will find the IC chip near the back of the board. The exact location is labeled (U3) and a version number written on it; (example B7AUX). This will be the chip to replace. (See Fig. 1)

On one end of this chip there is a notch to indicate which end goes which way (See Fig. 3) Note also that the print on the circuit board also indicates the location of this notch. Please familiarize yourself with this before removing the chip. Now carefully remove the chip by inserting a small, flat blade screwdriver under one side and pry up a little, and then do the same on the other end until the chip comes out. (See Fig. 2)



Fig.1.

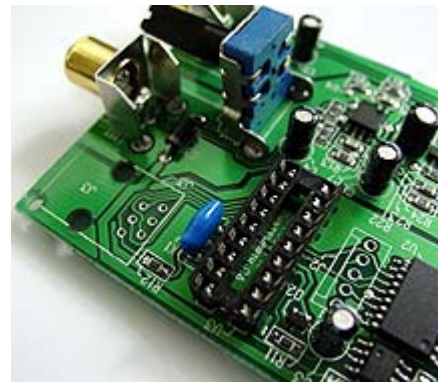


Fig 2.

2. Take the new chip and gently insert it into the socket taking into account the aforementioned notch. Be certain that all pins are in their respective position and push the chip straight down until firmly seated into the socket. Again, check that all pins are in the socket and make sure that the semi-circle at the end of the microprocessor chip is aligned with the semi-circle on the chip socket (See Fig. 3).

CAUTION: If the chip is reversed during installation, permanent damage WILL occur.

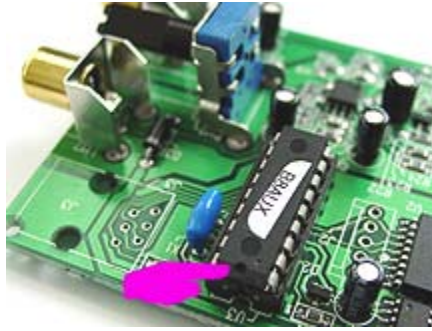
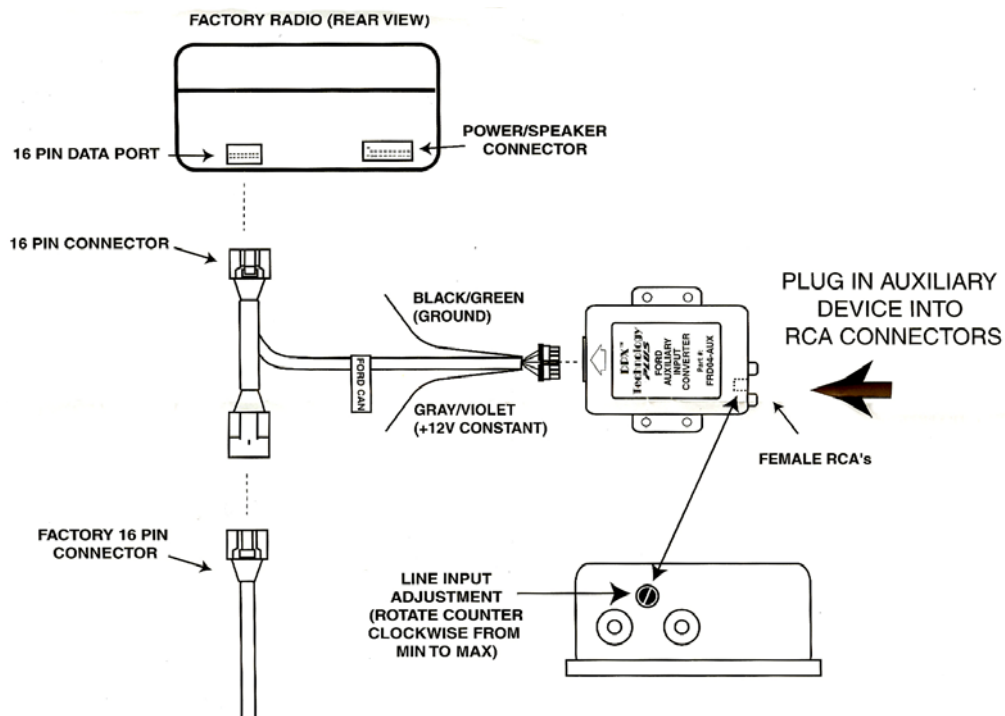


Fig.3

3. Reinstall the front case onto the back case making sure that all four corners snap into place. It may be necessary to apply extra pressure but take extra care not to break the tabs.
4. Reconnect the interface to the harness, connect the 16-pin connector to the radio and reconnect the factory 16-pin connector as illustrated below. The unit should be fully functional.



5. Should you have any questions or concerns with these instructions, contact PIE Technical Support @ 1(800)330-9754 before proceeding.

Updated 10/5/05

© 1995-05 Discount Car Stereo, Inc. All rights reserved. Information in this document is subject to change without notice. Other products and companies referred to herein are trademarks or registered trademarks of their respective companies or mark holders.