

Courtesy of: DiscountCarStereo.com
Serving the internet community since 1995



A2D-FRD04

QUICK START MUSIC STREAMING INSTALLATION GUIDE FOR SELECT 2004-10 FORD, LINCON, MERCURY

Created, January 20, 2017

Revised September 6, 2020

Introduction:

Ford CAN-BUS radio owners will be pleased to find they can now stream music without changing the look and feel of the dashboard components. The A2D-FR004 connects to the media port 16-pin connector on the radio which guarantees the best quality playback from any Smartphone, Tablet, Kindle, Laptop etc. with A2DP (music streaming) Profile. **Keep the radio and car you love** while enjoying Bluetooth playback features only available on newer cars.

Warning: This module replaces Satellite Radio and/or Rear Seat Entertainment (if equipped).

For more see **Frequent Asked question** at the end of this guide.

Installation:

Remove radio from dashboard to gain access to the connectors. (Vehicle specific radio removal instructions are not part of this guide, but may be available upon request)

1. With radio out, disconnect factory 16-pin plug (See **Fig. 3**) from radio (See **Fig. 1**)

Alert: If radio 16-pin connector is empty; skip to step 3.



Fig. 1

Radio connectors

2. Connect factory 16-pin plug removed from radio to adapter harness 16-pin connector (See **Fig. 2**).



Fig. 2

16-pin connector

3. Connect adapter harness 16-pin plug (See **Fig. 3**) to radio 16-pin connector vacated in step 1

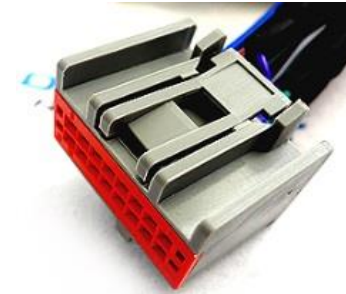


Fig. 3

16-pin plug

4. Tap/connect purple/black wire to purple/black* (PIN 2/ACC) wire on factory 24-pin plug (See **Fig. 4**)
5. Connect green/black ring terminal to radio chassis or remove ring terminal and tap/connect to black/purple (PIN 13/Ground) wire of factory 24-pin plug (See **Fig. 4**)

***Note:** Ford wire colors may vary, however pin locations for Accessory (pin 2) and Ground (pin 13) does not change.

Warning!! Purple/black wire must be connected to an accessory supply wire (not constant power).

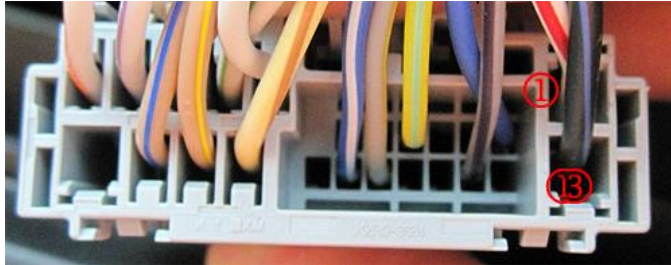


Fig. 4

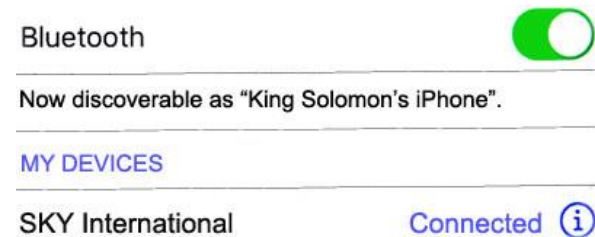
Ford 24-pin Power/Speaker Plug

6. Secure module and proceed to next section.

Pairing:

Pairing steps varies among devices but are basically the same. This process is done upon initial install and will not have to be repeated

1. Turn Ignition and radio "ON"
LED inside peephole will flash (pairing mode)
2. On A2DP device: go to **Settings, Wireless & Networks, Bluetooth Settings**
3. Select **Bluetooth** and turn on, select Bluetooth settings
4. Tap **Scan for devices**.
5. Wait for the Bluetooth device name to appear and select it. *Once paired, LED inside peephole remains steady and confirmation tone is heard on car speakers*



One connection

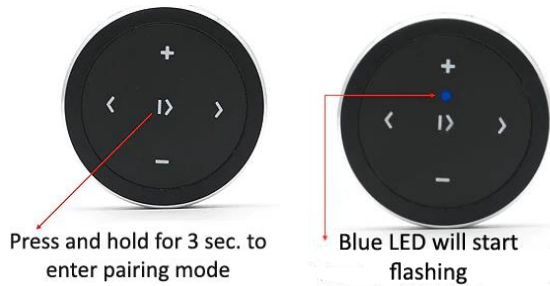
The A2D-FR004 "pairs" to one device at a time. You must disconnect from other devices in order to pair a second. Device last paired has priority and will automatically pair.

Optional Smart remote:

This optional smart remote is not required for operation, however instead juggling with audio device while driving (which is outright dangerous), simply mount remote to dashboard or steering wheel and perform the following functions:

1. Control music wirelessly
2. Activate VR commands (Google only.)
3. Track up/down
4. Volume up/down

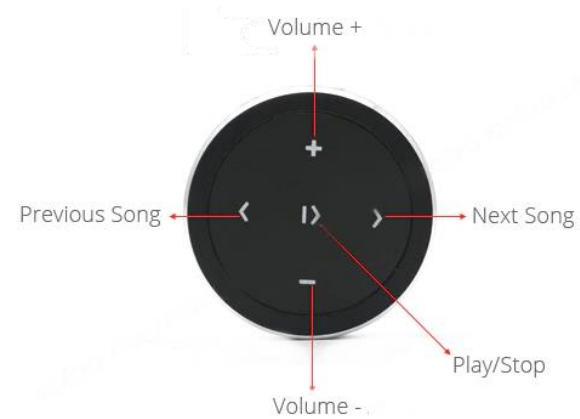
Pairing Bluetooth remote:



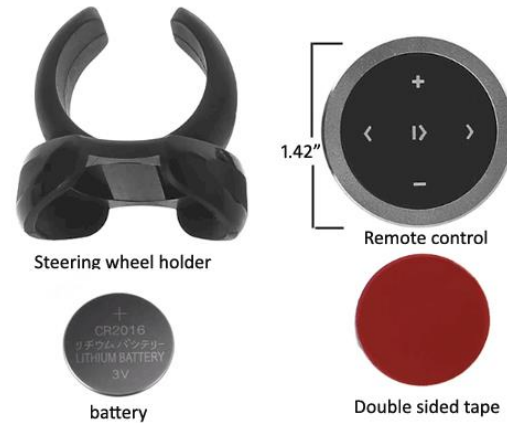
Select smart remote to pair

Smart remote Operation:

Use smart remote to perform the following functions on any iOS7.0 and higher or Android 4.4 and higher.



Contents:



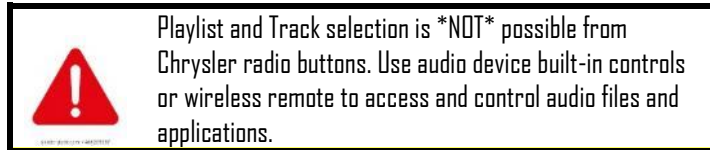
Test Operation:

1. Turn the ignition and radio "ON"
2. Press radio AUX button.

Note: If radio does not switch to AUX, cycle ignition OFF/ON and try again.



3. Launch Smartphone or tablet Audio streaming application
4. Use the radio volume control button to set the playback level.
5. Make certain audio device volume is set to at least 80%. Turn volume on radio to a comfortable listening level. If distorted, lower the volume on device until playback is distortion free.
6. If correct operation is confirmed go ahead and reinstall radio.



7. If correct operation is confirmed go ahead and reinstall radio

Frequent asked questions

1. **Does the A2D-FR004 work in vehicles with Ford Navigation radios**
NO. This module does not work in vehicles with **Navigation, Satellite Radio, SYNC or RSE.** These options require disconnecting.
2. **Does the A2D-FR004 work in vehicles with FORD Sync**
NO.
3. **Does the AUX-FR004 work with the Ford 6-CD Changer radio?**
YES; so long radio has "AUX" button and 16-pin connector.
4. **Can I use the radio buttons to control streaming device?**
NO; the A2D-FR004 does not control audio device. Use device built-in controls or optional smart remote to browse music library.
5. **Will I be able to make phone calls using this Device?**
6. **NO;** the A2D-FR004 does supports Hands-Free Calls. If call is made/received during streaming session, call must be operated by handset.
7. **Why do you recommend connecting power wire (green/black) to an accessory source instead of battery source**
By connecting to an accessory source, the module will power on/off with ignition key and automatically pair upon entering vehicle and un-pair on exit.

Disclaimer

- This product has no affiliation with Ford, SiriusXM
- We're not liable for misuse of this product.
- We recommend professional installation

Email support@discountcarstereo.com

© 1995-17 Discount Car Stereo, Inc. All rights reserved. Information in this document is subject to change without notice. Other products and companies referred to herein are trademarks or registered trademarks of their respective companies or mark holders.