

Courtesy of: DiscountCarStereo.com  
Serving the internet community since 1995



Mercedes-Benz



## A2D-MBCD

### QUICK START BLUETOOTH INSTALLATION GUIDE FOR SEELCT 1994-98 MERCEDES BENZ WITH CD CHANGER

(NOT FOR BECKER TRAFFIC PRO RADIOS)

Created October 10, 2016

Revised: September 13, 2021

## PRODUCT SAFETY & DISCLAIMER

READ ALL INSTRUCTIONS CAREFULLY BEFORE INSTALLING, FAILURE TO DO SO MAY CAUSE PERSONAL INJURY OR DAMAGE TO PRODUCT AND/OR PROPERTY

- This installation guide is provided as a GENERAL installation guide, some vehicles vary and may require additional steps. We do not accept responsibility for third party labor charges or modifications. Exercise due-diligence when installing this product.
- We do not accept any responsibility for vehicle damage or personal injury resulting from the installation of this product.
- Careless installation and operation can result in equipment damage.

## Requirements:

ANALOG CD CHANGER

## Introduction

Does your 1994-98 Mercedes have a working CD changer in trunk/hatch? If so, read on otherwise [click here](#). The A2D-MBCD Bluetooth adapter allows 1994-98 Mercedes vehicles equipped with a working **CD changer** in trunk or hatch to support music streaming from smartphone etc. and does not require disconnecting the CD changer. The required **CD changer remains connected and functional**. The module connects to the radio behind the dash and allows users to enjoy audio content including Apple music, Pandora, audio books, GPS and more on the car speakers! When in the mood for tunes on CD; simply un-pair Smartphone

Thanks to the A2D-MBCD users **keep factory radio and CD Changer** while enjoying Bluetooth features only available on newer cars.

**Warning:** A working CD changer required. If vehicle does not have a working changer, purchase our [A2D-MBR](#)  
Not applicable Mercedes Becker traffic Pro radios or any 1999-Up fiber optic CD changer.

## Installation

Installing this module requires radio removal  
Remove radio from dashboard to gain access to connectors. A pair of removal tools (See **Fig. 1**) required (sold separately).



Fig. 1  
removal [tools](#)



this radio **does not apply**.



1. Slide tools into radio slots (left and right) with straight edge facing away until detent position. Withdraw radio by pulling tools. See **Fig. 2**  
Click [here](#) for more detailed radio removal instructions.

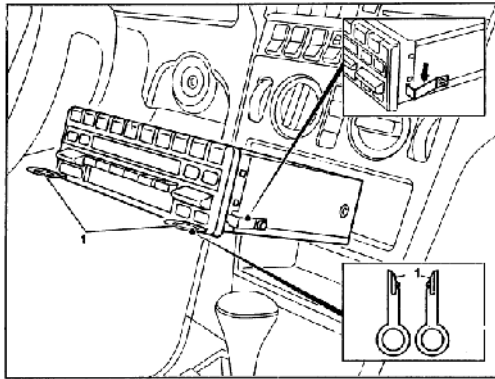


Fig. 2

2. Disconnect 10-pin plug (See Fig. 3) from radio chamber(C) (See Fig. 4) and connect to harness 10-pin connector in Fig. 5



Fig. 3

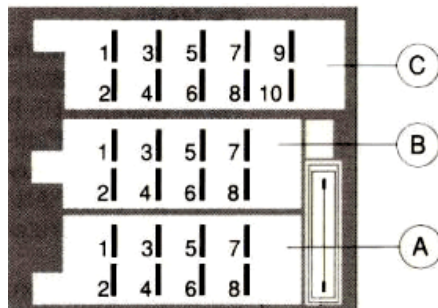


Fig. 4  
radio connectors

3. Connect harness 10-pin plug (See Fig. 6) to radio chamber (C) vacated in step 2 (See Fig. 4)



Fig. 5



Fig. 6

4. Disconnect solid **BLACK** plug from radio chamber A & B (See Fig. 4/7) and connect to harness matting connector (See Fig. 8)

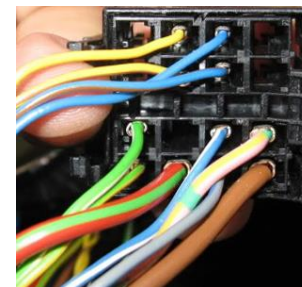


Fig. 7

5. Connect harness 8-pin **BROWN** plug to radio chamber (B) (See Fig. 4).
6. Connect harness 8-pin **BLACK** plug to radio chamber (A) (See Fig. 4)

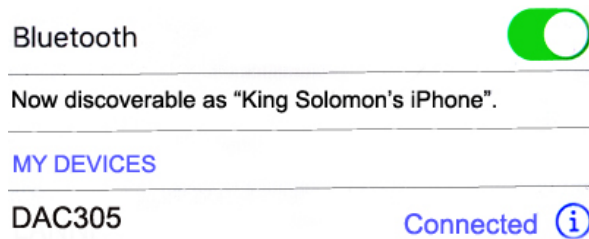


**Fig. 8**  
harness

## Pairing

Pairing process varies among devices but the basic steps are the same. This process is done upon initial install and will not have to be repeated.

1. Turn Ignition and Radio "ON"  
*Green LED inside adapter peephole will flash (pairing mode)*
2. On A2DP device: Go to **Settings, Wireless & Networks, Bluetooth Settings**
3. Select **Bluetooth** and turn on.
4. Select Bluetooth settings
5. Tap **Scan (Search) for devices**.
6. Wait for Bluetooth device name to appear and select it.  
*Green LED inside adapter peephole will glow steady (paired)*



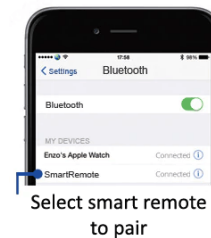
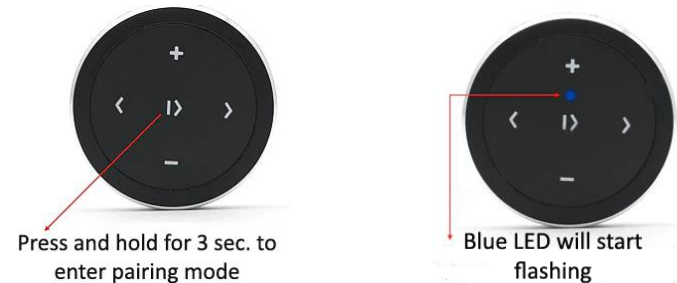
## Optional remote

The wireless remote is optional and not required for the A2D-MBRCD to work, however instead of trying to juggle a phone while steering, simply press the remote buttons which can be mounted to steering wheel.

Remote control functions:

1. Control music wirelessly
2. Activate VR commands (Google play – Not for Siri.)
3. Track up/down
4. Volume up/down

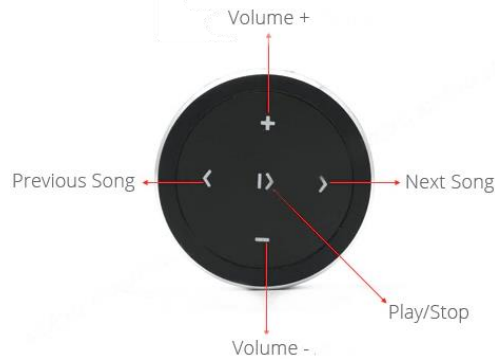
## Pairing remote:



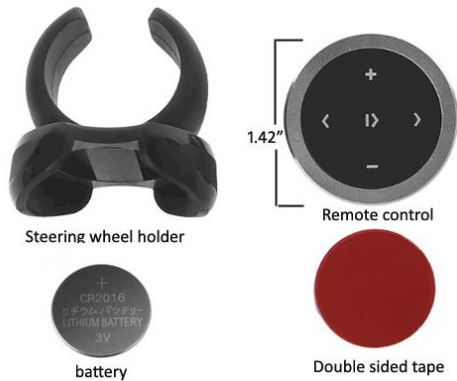
Select smart remote to pair

## Remote control operation:

Use wireless remote to perform the following functions on any iOS7.0 and higher or Android 4.4 and higher.



## Contents:



## Operation

1. Turn radio "ON"
2. Press radio "CD" button to enter changer mode.  
*At least one Disc must remain in changer magazine.*
3. Launch Smartphone or Tablet music application
4. Use radio volume control button to set playback level.  
*Make certain audio device volume is set 80% or more. If distorted, lower volume on audio device.*

**Warning:** Playlist and Track selection is \*NOT\* possible from the radio. You must use audio device (e.g., Smartphone etc.) built-in controls to access music files and applications

5. If correct operation is confirmed go ahead and reinstall radio. To re-install radio ensure module/harness are tucked away so to allow radio install. There is space behind climate control etc.). Remove removal keys from radio by pressing release tab. Insert radio to cavity until it locks in place.

## Listening to CD

To switch from streaming to CD simply:

**Disable Bluetooth on streaming device.** CD changer playback resumes.

Control changer from radio buttons as customary.

To return to music streaming simply **enable Bluetooth on streaming device.**

**Note:** Streaming has priority and remains until Bluetooth is disabled. CD changer playback is possible after when device is unpaired or Bluetooth is turned-off.

## Frequent ask question & Troubleshooting

1. **Does the A2D-MBCD work in vehicles with CD changer?**  
**YES;** CD changer is required and remains functional.  
At least one disc must remain in changer magazine.
2. **Does the A2D-MBCD work on all Mercedes radios?**  
**NO;** Works on 1994-98 Becker BE1492, BE1692, BE2210, BE1350) Alpine CM2296 and CM2396 radios. **Not for Becker traffic pro radios—these require our [A2D-BKR](#) or [A2D-BKRC](#)**
3. **Does the A2D-MBCD work on 1999+ Mercedes radios with CD changer?**  
**NO;** 1999+ Mercedes Audio 10, 20, 30, 50, Comand. PCM etc. have digital optic CD changer ports (See **Fig. 9**) and not compatible with this part.



Fig. 9

4. **Can I control Smartphone or Tablet from the radio buttons?**  
**NO;** you **must continue to use Smartphone or Tablet built-in controls and display to operate the device.** The volume button on radio is used to set the playback level.
5. **The 10-pin plug on this adapter looks identical to other Mercedes, and Blaupunkt radios. Does the A2D-MBCD work on these radios?**  
**NO;** (See **Fig. 9**) if radio has a **digital port** (fiber optic) it is **NOT compatible.**
6. **Will I be able to make phone calls using this Device?**  
**NO;** the A2D-MBCD does supports Hands-Free calls.

7. **What happens when streaming and a call comes in?**  
Your phone will mute the stream. Answer call using handset. Once call ends, streaming resumes.
8. **Can I pair or save more than one device to the A2D-MBCD?**  
**YES;** more than one device (slaves) can be paired however only one connection can be active at a time.  
When pairing new device, ensure module has not already connected to or is within range of another paired device. Module is ready for pairing when LED flashes green. If Green LED is steady, the module has already paired with another device. See LED status through peep-hole on module underside

### Disclaimer

- This product has no affiliation with Mercedes Benz, Alpine or Becker
- We're not liable for misuse of this product.

Email [support@discountcarstereo.com](mailto:support@discountcarstereo.com)

© 1995-Sep-21 Discount Car Stereo, Inc. All rights reserved. Information in this document is subject to change without notice. Other products and companies referred to herein are trademarks or registered trademarks of their respective companies or mark holders.