



BLU-CHRY02

QUICK START INSTALLATION GUIDE FOR CHRYSLER RADIOS WITH "MODE" BUTTON

created August 10, 2015

Revised: December 29, 2022

PRODUCT SAFETY & DISCLAIMER

READ ALL INSTRUCTIONS CAREFULLY BEFORE INSTALLING, FAILURE TO DO SO MAY CAUSE PERSONAL INJURY OR DAMAGE TO PRODUCT AND/OR PROPERTY

- This installation guide is provided as a GENERAL installation guide, some vehicles vary and may require additional steps. We do not accept responsibility for third party labor charges or modifications. Exercise due-diligence when installing this product.
- We do not accept any responsibility for vehicle damage or personal injury resulting from the installation of this product.
- Careless installation and operation can result in equipment damage.

Requirement

Radio with 10-pin CD changer port and MODE button

Introduction

Your older Chrysler still drives great, but lack support for modern devices and if looking to play Smartphone, Tablet etc. while keeping the original radio in place; the BLU-CHRY02 is for you!!

The BLU-CHRY02 module provides a **music streaming** solution for any Smartphone or Tablet with AZDP profile. **(Does not support hands-free calling)** A Bluetooth connection means no wires, clutter or complicated setup. The BLU-CHRY02 solution connects to the 10-pin CD changer/Sat radio socket on the back of the radio which guarantees to best possible sound.

No longer will you have to listen to the same songs or annoying commercials on the radio, simply pair Smartphone to module and enjoy music streaming sites including Apple music, Spotify while also being able to advised of the next exit or turn using favorite GPS app.

See **Frequently Asked question** at the end of this guide for details.

Installation -Newest version 10.23

Radio removal required to access radio connectors. Vehicle specific radio removal is not part of this guide but may be available upon request.

With radio out;

1. Connect module 10-pin plug (See Fig. 1) to radio 10-pin socket, (See Fig. 2) *Any factory option (satellite radio, CD changer etc.) remain permanently disconnected.*



Fig. 1
10-pin plug

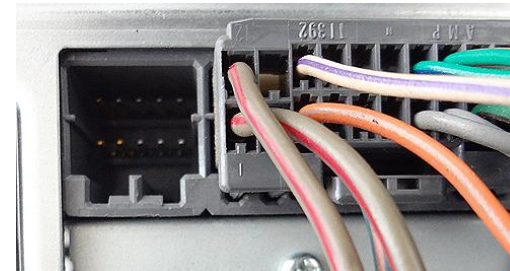


Fig. 2
Radio 10-pin socket

2. Secure module and proceed to next step.

Pairing

Pairing process varies among devices but basic pairing steps are the same. This process is done upon initial install and will not have to be repeated. Once paired, smart device will automatically pair upon turning radio "ON".

1. Turn Ignition and radio "ON"
2. Go to *Settings, Bluetooth Settings*
3. Select *Bluetooth* and turn on.
4. *Scan for devices.*
5. Wait for Bluetooth device name (See below) to appear and select it.
(See Fig. 4)

LED inside module will glow steady (paired)

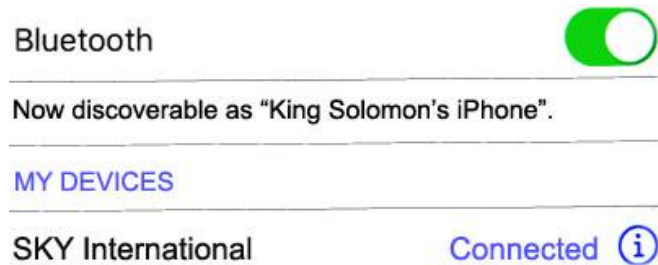


Fig. 4

Optional remote control

The remote control is not required for module to work as described; however, it makes for a safer ride as user will not have to fumble the audio device while driving. (Does not control Chrysler radio operation)

Optional Bluetooth wireless remote control allows users to:

1. Control music wirelessly
2. Track up/down
3. Volume up/down

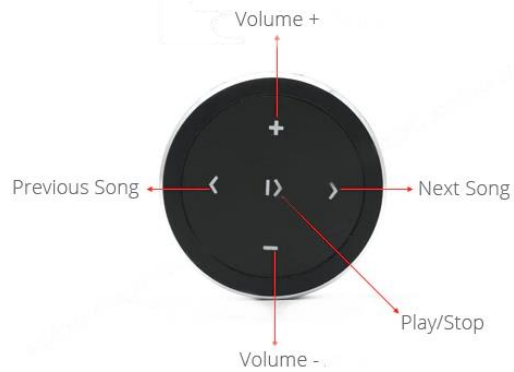
Pairing:



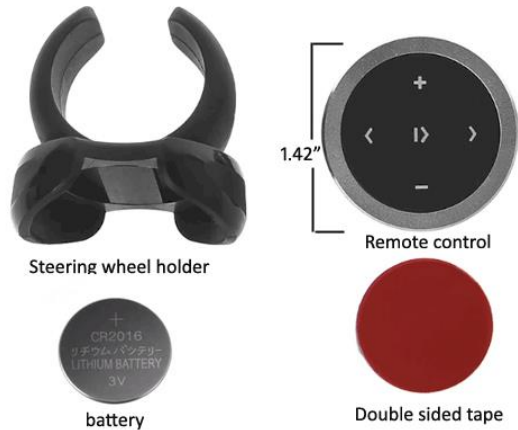
Select smart remote to pair

Controls:

Use Bluetooth wireless remote to perform the following functions on iOS7.0 and higher or Android 4.4 and higher.



Package Contents:



Operation

1. Turn ignition and radio "ON"
2. Press "MODE" button on radio to enter Bluetooth mode (See Fig. 6)



Fig 6

3. Launch Smartphone or Tablet streaming application and verify audio device "media" volume is set to 80% or more
4. Turn radio volume control button to set playback level.

Warning: Playlist, Track selection, text display etc. is *NOT* possible from the Chrysler radio. Use the audio devices built-in controls or purchase optional remote control to control audio files.

5. If correct operation is confirmed go ahead and reinstall radio.

Frequent ask questions & troubleshooting

1. Will the BLU-CHRY02 work on all Chrysler radios with 10-pin port?
NO; For the BLU-CHRY02 to work as described, factory radio must have: 10-pin port (See Fig. 2) a "MODE" button, DISC up on Preset #1 and DISC down on Preset #5 as seen in Fig. 7.
Radios with MODE button only are NOT compatible.



Fig. 7

2. My vehicle has a "rounded face" radio with CD-C button. Will the BLU-CHRY02 work?
NO, radios with CD-C button and 8-pin CD changer port requires our [BLU-CHRY98](#).
3. My 2002 radio does NOT have a Mode button, will this adapter work?
NO; Radios without "MODE" button are NOT capable of connecting to this device. Works only on radios described in question 1 and pictured in Fig. 8
4. Can I use the BLU-CHRY02 for hands-free calls?
NO; The BLU-CHRY02 is for music streaming and **does not** support hands-free calls. Purchase our [AZDIY-CHRY02](#)
5. Will I have to disconnect satellite radio or remote CD changer?
YES, this module uses the 10-pin radio port and any factory option already in place must be permanently disconnected.
6. Will radio screen display song name etc.?
NO; Song, artist, genre, etc are not displayed on radio screen
7. Will I have to pair smart device (smartphone) every time I enter vehicle?
NO. After initial pairing, module pairs to smart device as soon as key is in ACC or ON position. (Smart device must have Bluetooth enabled).

Disclaimer

- This product has no affiliation with Chrysler
- We're not liable for misuse of this product.
- We recommend professional installation

For support email support@discountcarstereo.com

© 1995-Dec-22 Discount Car Stereo, Inc. All rights reserved. Information in this document is subject to change without notice. Other products and companies referred to herein are trademarks or registered trademarks of their respective companies or mark holders.