



# BLU-GM1

## BLUETOOTH AUDIO STREAMING MODULE INSTALLATION GUIDE IN SELECT 1995-05 GM

Created October 10, 2016

Revised April 20, 2025

## PRODUCT SAFETY & DISCLAIMER

READ ALL INSTRUCTIONS CAREFULLY BEFORE INSTALLING. FAILURE TO DO SO MAY CAUSE PERSONAL INJURY OR DAMAGE TO PRODUCT AND/OR PROPERTY

- This installation guide is provided as a GENERAL installation guide, some vehicles vary and may require additional steps. We do not accept responsibility for third party labor charges or modifications. Exercise due-diligence when installing this product.
- We do not accept any responsibility for vehicle damage or personal injury resulting from the installation of this product.
- Careless installation and operation can result in equipment damage

## REQUIREMENT

1995-05 WITH AM/FM/TAPE RADIOS AND 2000-05 WITH AM/FM/CD RADIOS

## Introduction

If you drive an older GM car, truck or Van that still has the original radio and looking to upgrade to music streaming; the BLU-GMI is for you! The BLU-GMI streaming module works on select 1995-05 GM radios with CD changer controls and replaces separate/slave or remote player (if present). A wireless connection means no wires, clutter or complicated setup. All the user has to do is connect module to radio 9-pin port, pair Smartphone, Tablet etc. and enjoy tons of applications including Pandora, Apple music and more on the car system.

**Optional smart remote:** Allow users to control select smartphone functions while keeping eyes on the road. (See details on page 3) or **Frequently Asked question** at the end of this guide for details.

### Alert: (Please read before proceeding)

- 1: **1995-99 AM/FM/CD radios are NOT compatible (don't ignore warning)**
- 2: 2000-05 AM/FM/CD radios are compatible
3. 1995-05 AM/FM/TAPE are compatible.
4. Any separate (slave) Tape, CD player or CD changer must be disconnected

## Installation

1. Remove factory radio from dash (Vehicle specific radio removal procedures are not part of this guide but may available upon request)
2. If present, disconnect factory 9-pin plug from radio socket (See Fig. 1)  
**Note: If 9-pin socket is empty, proceed to step 3**



Fig. 1

3. **Vehicle with BOSE:** Connect factory 9-pin plug (removed from radio in step 2) to installation harness mating 9-pin socket (white) (See Fig. 2)



Fig. 2

4. Connect installation harness 9-pin plug to radio 9-pin socket vacated in step 2. (See Fig. 3)



Fig. 3

5. Separate player (CD, TAPE or CD changer) if present; remains disconnected. **Installation harness 9-pin socket (white) remains empty except in vehicles with BOSE.**
6. Secure module and proceed to next step

## Optional:

### Smart remote control:

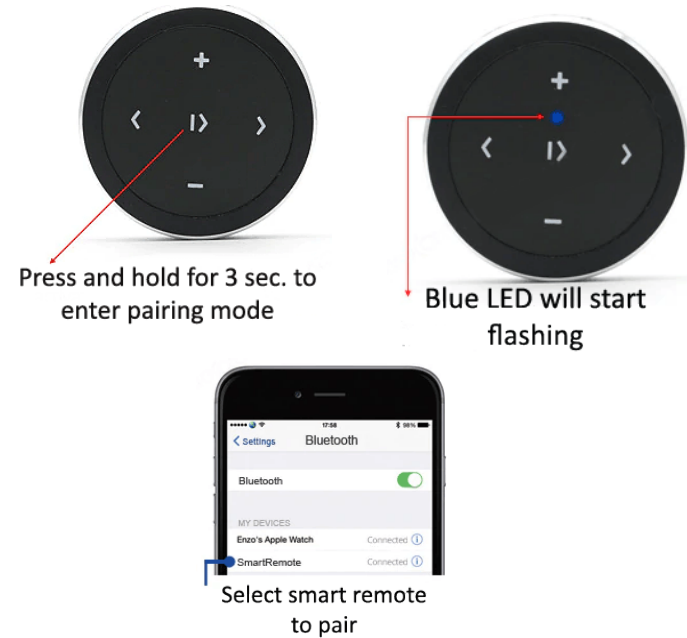
Purchase optional Bluetooth smart remote to control music apps while keeping eyes on the road.

With remote users are able to control the following smartphone functions:

**(Do not apply to GM radio functions)**

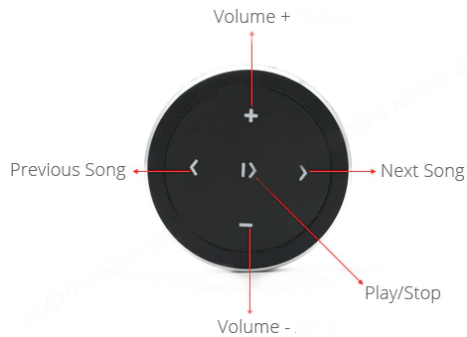
1. Control music wirelessly
2. Activate Phone commands (Google play.)
3. Track up/down, Volume up/down

### Pairing:

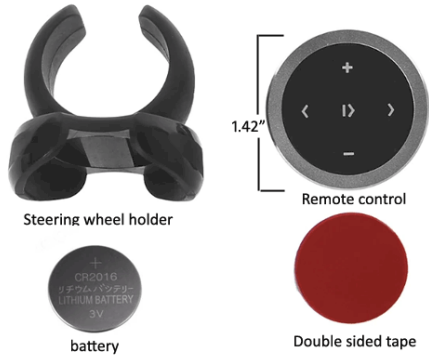


## Operation:

Use wireless remote to perform the following functions on any iOS7.0 and higher or Android 4.4 and higher.



## Contents:



## Pairing

Pairing process varies among devices but the basic steps are the same. This process is done upon initial install and may not have to be repeated.

1. Turn ignition and radio "ON"
2. Go to audio device *Bluetooth Settings* and enable *Bluetooth*
3. Tap *Scan for devices*.
4. Wait for Bluetooth name to appear and **select it**. (See images below)

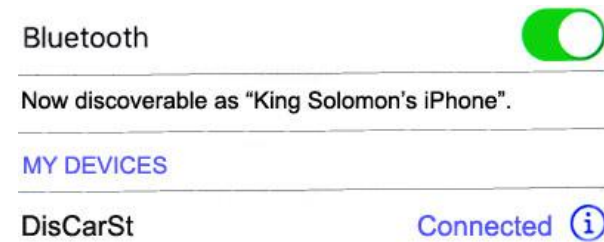


Fig. 4

## Operation


1. Turn ignition switch to "ACC" or "ON"
2. To enter Bluetooth mode, press "AUX" button on radio



Fig. 5

**Note:** Radio screen briefly switches to "CD" display mode as seen in Fig.5 and after a short time to time display mode. (See Fig. 6)

3. Launch smartphone or tablet streaming application.
4. Ensure smartphone volume is set to 80% or higher and use radio volume button to set playback level.



Playlist and Track selection **\*NOT\*** possible from radio. Use audio device built-in controls or optional wireless remote to access and control audio files.

5. If correct operation is confirmed, re-install radio/panels.

## Comparison features:

These adapters/cables work in select 1995-05 GM equipped with original Theftlock radio and some may also require separate/slave single CD, Cassette or CD changer to work.

### Bluetooth hands-free and streaming modules:

Feature	BTH-GMI	BT3-GMI
Retains remote player*	✓	X
Requires remote player*	✓	X
Charging (USB)	Built-in	Built-in
Visor microphone	✓	✓
Requires 12V ACC wire	X	X
Hands-free calls	✓	✓
Audio streaming	✓	✓
Controls from radio buttons	X	✓
Wireless remote	✓	X
Module install location	Radio	Radio

\*Remote players include separate (CD, TAPE or 6-disc changer) installed below climate controls, lower dash, armrest, trunk/hatch. Separate player is not built-into the AM/FM radio.

### Bluetooth streaming modules (Not for hands-free calls)

Feature	BT2-GMI	BLU-GMI	BTA-GMI
CD changer retention	x	x	✓
Requires CD changer	x	x	✓
Audio input (AUX)	x	x	x
Charging (USB)	x	x	Built-in
Visor microphone	x	x	x
Requires 12V ACC wire	x	x	x
Hands-free calls	x	x	x
Audio streaming	✓	✓	✓
Controls from radio buttons	✓	x	x
Wireless remote	x	**	✓
Module install location	Radio	Radio	Radio

\*Remote players include separate (CD, TAPE or 6-disc changer) installed below climate controls, lower dash, armrest, trunk/hatch. Separate player is not built-into the AM/FM radio.

\*\* remote control optional

**NOTE:** The faceplate on 1995-99 CD radios and 2000-02 CD radios is identical (See Fig. 6) The BLU-GMI is compatible with 2000-02 CD radios but NOT compatible with 1995-99 CD radios.



**Fig.6**  
AM/FM/CD radio

## Frequently asked questions

- 1. My 1997 Silverado has an AM/FM/CD player in upper dash and also has a separate cassette player below climate controls; will the BLU-GMI work in this instance?**  
**YES.** Any 1995-05 GM with separate/slave unit (See Fig. 7) attached is compatible and requires disconnecting separate/slave unit. 1995-99 CD player radio without separate unit in lower dash (See Fig. 7) is **NOT compatible.** This restriction applies only to 1995-99 CD radios without separate unit. 2000-05 AM/FM/CD player radios are compatible with or without separate unit.
- 2. My vehicle has a separate cassette player in lower dash; will the BLU-GMI work?**  
**YES;** but the separate cassette must be disconnected and will no longer play.
- 3. My vehicle has a separate single CD player below climate controls; will the BLU-GMI work?**  
**YES;** but the separate CD player must be disconnected and will no longer play.

- 4. I would like to have music streaming in my truck, and also keep the separate player in lower dash; do you offer a solution by which I can keep the separate player?**  
**YES;** Purchase our [BTA-GMI](#) which requires and retains separate/slave unit in lower dash (See Fig. 7)
- 5. When I decide to remove the BLU-GMI, will I have wiring issues?**  
**NO;** the BLU-GMI plug-n-play harness does not interfere with factory wiring integrity. Once disconnected the system will function as it did prior.
- 6. How is streaming sound quality?**  
 Sound quality is very good and without static or interference provided vehicles electrical systems are up to standard.
- 7. Can I use the BLU-GMI to make/receive phone calls?**  
**NO;** the BLU-GMI supports Bluetooth music streaming (A2DP) but does NOT support Bluetooth Hands-Free calls. Purchase our [BTH-GMI](#) instead.
- 8. My vehicle has two separate units, one in lower dash and CD changer in armrest. Will the BLU-GMI work?**  
**YES.** But both separate units will no longer function. Purchase our [AUX-GMI](#) or [A2D-GMI](#) to retain separate unit functionality.



**Fig. 7**

\*Separate/slave units (CD or cassette) are installed in lower dash or below climate controls. Main AM/FM Theftlock radio resides in upper dash and remains connected and functional

**Disclaimer**

- This product has no affiliation with GM
- We're not liable for misuse of this product.
- We recommend professional installation.

Email [support@discountcarstereo.com](mailto:support@discountcarstereo.com)

© 1995-Apr-25 Discount Car Stereo, Inc. All rights reserved. Information in this document is subject to change without notice. Other products and companies referred to herein are trademarks or registered trademarks of their respective companies or mark holders.