



BT5X-CDR30

QUICK START BLUETOOTH INSTALLATION GUIDE FOR PORSCHE CDR30 & CDR31 RADIOS

Created August 16, 2024

Revised: November 11, 2024

PRODUCT SAFETY & DISCLAIMER

READ ALL INSTRUCTIONS CAREFULLY BEFORE INSTALLING, FAILURE TO DO SO MAY CAUSE PERSONAL INJURY OR DAMAGE TO PRODUCT AND/OR PROPERTY

- This installation guide is provided as a GENERAL installation guide, some vehicles vary and may require additional steps. We do not accept responsibility for third party labor charges or modifications. Exercise due-diligence when installing this product.
- We do not accept any responsibility for vehicle damage or personal injury resulting from the installation of this product.

Careless installation and operation can result in equipment damage

Requirements

PORSCHE CDR30 AND CDR31 RADIOS

Introduction

Most high-end car manufacturers exceed their client's demands in most regards but may lag behind technology when it comes to audio systems. Those wanting support for more attractive modern media formats, we offer the BT5x-CDR30. This kit is compatible with virtually all Bluetooth phones, and sounds great whether using for mobile conversations, streaming music or listening to an audio device (e.g., Mp3 player, Sat radio etc.) on Porsche equipped CDR30 or CDR31 radio. The included wireless remote is used to track up/down, accept/reject phone calls, adjust device volume all while keeping eyes on the road.

Installation

Radio removal required to gain access to connectors. For radio removal instructions click [here](#) for radio removal [instructions](#).

1. With radio removed disconnect (press release tab) Green 12-pin micro-Quadlock (See **Fig. 1**)



Fig. 1
Radio connector

Warning: Dependent on factory options, The 12-pin micro Quadlock (**GREEN** and **BLUE**) pictured in **Fig. 1** may or may not be present. **GREEN** micro-Quadlock (if present) must be disconnected and replaced by **BLACK** micro-Quadlock plug (See **Fig. 2**) from install harness

2. Install harness **BLACK** micro-Quadlock to radio chamber vacated in step 1 (See **Fig. 2**)

Tip: Plugs are "keyed" which ensures proper fitment.

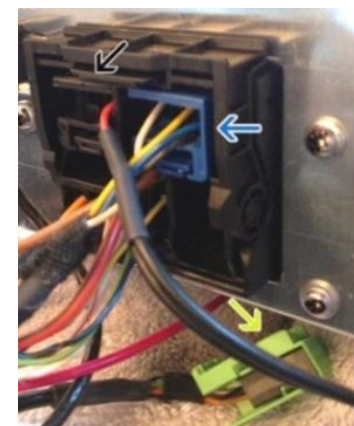


Fig. 2
Green micro-Quadlock remains disconnected

- Secure black wire to ground. Use radio chassis screws to secure ground wire (See **Fig. 3**) or locate alternate ground source.

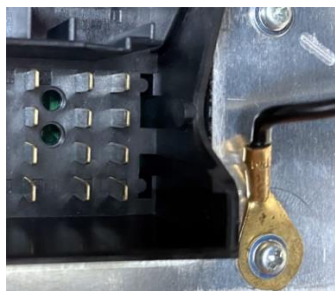


Fig. 3

- Run red accessory wire (See **Fig. 4**) to suitable 12V Accessory supply source in vehicle (e.g., fuse box etc. or suggestions below)



Fig. 4

Accessory wire

Suggested 12V accessory sources:

- In 968: Left foot well Fuse box at Row C, Fuse 1 (7.5A/15A)
- In 987: Kick Panel Fuse box at **Row B, Fuse 9** (7.5A)
- Alternate:** Remove hand-brake cover, locate **orange wire**. (See **Fig. 5**)
To avoid battery drainage, ensure circuit to which you connect module 12V accessory wire is turning ON/OFF with key prior to finalizing. Voltmeter or test light recommended.
- Tap **WHITE** wire (**pin 12**) on radio main Quadlock (See **Fig. 6**). This is the antenna/amp turn on controlled radio ON/OFF button. **Please verify voltage remains @12V when radio is in "CD/AUX" mode.**



Fig. 5

harness below brake lever

Warning: Accessory wire must be connected to **accessory supply** otherwise kit will not work as intended. Remember Accessory supplies may also power other equipment and cause engine noise. Please verify voltage condition prior to finalizing. If necessary, purchase a Noise Filter (e.g., [NF3A](#))

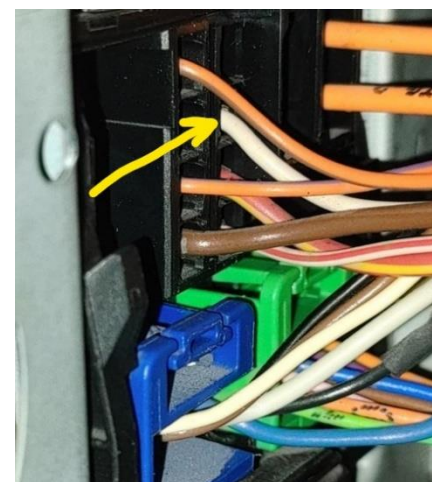


Fig. 6

- Use clip to secure microphone to headliner or visor (See **Fig. 7**)
- Route microphone cable (10 ft. long) down side pillar, under steering column and into radio cavity.
- Connect microphone plug to module "MIC" input. (See **Fig. 8**)
Wind noise will negatively affect phone audio. Users are advised to install microphone away from wind/ventilation ducts etc.



Fig. 7



Fig. 8

Excursive caution when routing microphone so to not damage the cable and ensure no ventilation ducts are pointed towards microphone.

Optional USB type-C charging kit (charge only)



Optional USB type-C charger can be added to the BT5x-BKR kit. Should you decide to add it, we suggest one of 3 installation options:

- A. Flush to dash/panel requires drilling a $\frac{3}{4}$ " hole**
- B. Flush with support bracket** (Mount terminal wherever your installation demands without drilling)
- C. Freestanding-** (default)

A. Flush to dash/panel (drilling required)

1. Drill a $\frac{3}{4}$ " hole in the dash/panel using a step drill bit or equivalent (See Fig. 9)



Fig. 9
Step drill bit

2. Insert cable through hole created in step 1
3. Connect cable to USB-C port on charger Fig. 10)



Fig. 10

4. Snap USB head to opening until flush with surface (See Fig. 11)



Fig. 11

Tuck and secure any extra wire from moving parts and test operation

Pairing

Pairing process varies among devices but basic steps are the same. This process is done upon initial install and will not have to be repeated.

1. Turn ignition and radio "ON"
2. From your Bluetooth enabled device, turn the Bluetooth ON and search for Bluetooth devices.
3. When a list of available Bluetooth devices appears on your Bluetooth device, select "DisCarSt" (See Fig. 12)
4. Confirmation "tone" is heard on car speakers.
5. The unit will automatically enter the BT Audio source and you can now start streaming audio from your Bluetooth enabled device.

Note: If the mobile phone doesn't support SSP (Simple Secure Pairing) Profile, please enter the pass code of "0000"

Bluetooth



Now discoverable as "King Solomon's iPhone".

MY DEVICES

DisCarSt

Connected ⓘ

Fig. 12

Operation

1. Turn ignition and radio "ON"
2. Press radio "CD/AUX" button until "AUX MODE" is displayed
Alternate: Switch from CD to AUX by pressing "AUX" soft key
3. Launch audio device streaming application.
4. Set audio device volume to 80%-- adjust as needed based on playback quality (reduce if distorted).
5. Use wireless remote buttons or device built-in controls to change tracks, adjust device volume, pause etc. (See Fig. 13)
6. Place test phone call or ask someone to call.
Note: Ensure radio is in "AUX" mode
7. To accept, tap "PREVIOUS TRACK" on remote control (See Fig. 13)
8. To reject, tap "NEXT TRACK" remote control (See Fig. 13)
Note: To adjust volume (+/-) use tapping action instead of tap and hold



Fig. 13

9. If correct operation is confirmed go ahead and reinstall radio.

Frequent ask question & troubleshooting

1. **My vehicle has factory Hands-free. Does it remain functional?**
YES; Factory Bluetooth (if present) remains functional.
Alert: Both the factory and the BT5x must be paired for wireless hands-free and streaming operation.
2. **Does the BT5x-CDR30 work on all Porsche radios?**
NO; the BT5x-CDR30 works only on Porsche CDR30 and CDR31 radios.
3. **Will radio display call number or song name?**
NO. This is not supported on these radios.
4. **Is it possible to control smartphone music from radio buttons?**
NO; Use smartphone built-in controls or included remote or voice commands. Use radio volume button to set playback level.
5. **Will radio mute when call is made and/or received?**
Muting is possible when radio is in "AUX/Bluetooth mode. If in any other mode (e.g. AM/FM); radio will not mute. Switch radio to "AUX" mode.
6. **How to remove CDR-30 and CDR-31 radios from the dash?**
Click link below for help removing radio from dash.
<https://www.youtube.com/watch?v=dlrPQftUvAs>
7. **My module paired when first installed, but does not connect (pair) when entering vehicle. What can be done to fix this?**
It is possible accessory wire (RED) was connected to a battery source (always on) which explains why module paired initially but not thereafter. Please ensure module is connected to 12V accessory supply or one that turn off/on with ignition and/or radio.

Disclaimer

- This product has no affiliation with Porsche, Becker or Apple
- There are no warranties expressed or implied by purchase of this product
- We're not liable for misuse of this product.

Email support@discountcarstereo.com

© 1995-Nov-24 Discount Car Stereo, Inc. All rights reserved. Information in this document is subject to change without notice. Other products and companies referred to herein are trademarks or registered trademarks of their respective companies or mark holders.