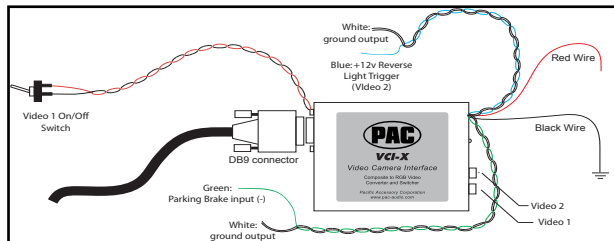




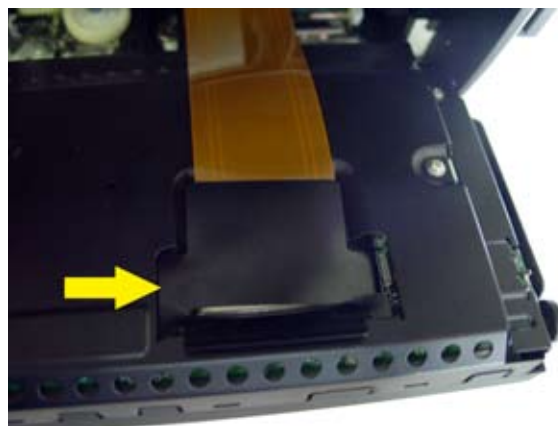
Video Camera Interface Kit for the GM Full Size Truck & SUV Navigation Radios
This interface will **ONLY** work in these vehicles -will **NOT** work with any other GM navigation radios

1. Connect the VCI-GM3's black power wire to chassis ground. Connect the red wire to the vehicle's +12 volt accessory. The power wires are the ones coming out from the DC 12V side of the case. If using the NAV-1129, simply connect the red wire to the retained accessory power and the black wire to the ground output.
2. Connect the VCI-GM3's Blue Trigger wire to the vehicle's +12 volt reverse light supply wire. The Reverse wire will show +12 volts when the vehicle is put into reverse. If using the NAV-1129, simply connect to the reverse output.
3. Connect the Video Back-up Camera's video output to the VCI-GM3's Video 2 input. *(Optional: The VCI-GM3's Video 1 input can be used for a second video backup camera. The toggle switch selects between the radio's normal display or Video 1 input. Video 2 input has precedence over Video 1 input, when the blue wire receives +12volts, regardless of the switch position.)*



- 1) With the navigation unit on, press the “Change Map Coverage” option under the “Nav” menu and eject the navigation disc. **WARNING! Wait for the Map Disc to eject and set aside. Failure to eject the Map Disc will cause failure of the navigation DVD-ROM Drive.**

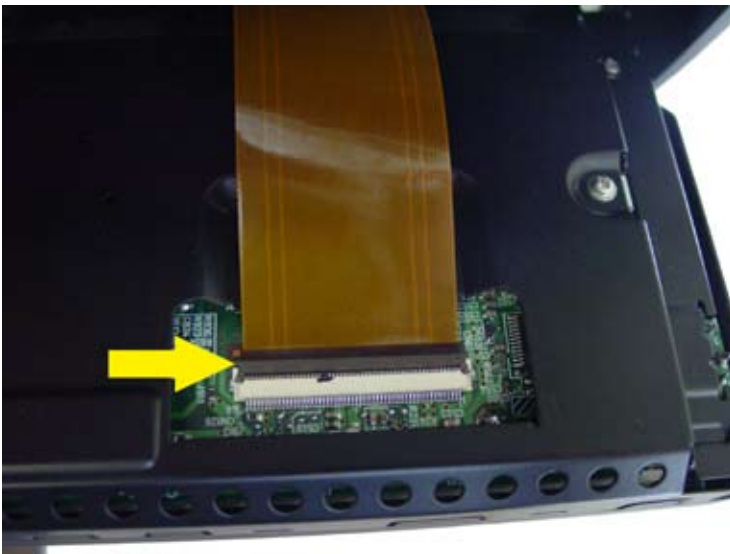
- 2) **Be sure you have removed the Map Disc**, then with the display open, disconnect and remove the navigation unit from the vehicle.



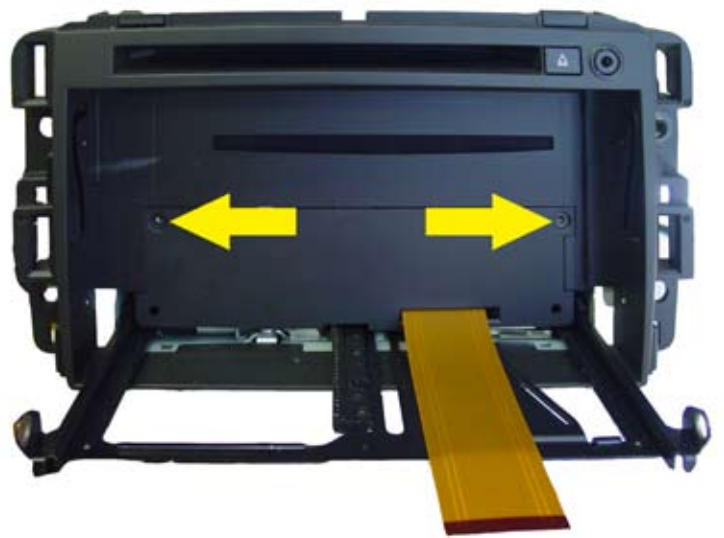
- 3) Remove the small Phillips screw on each side of the display. Remove the display from the navigation unit

- 4) Remove the plastic shield covering the factory ribbon cable.

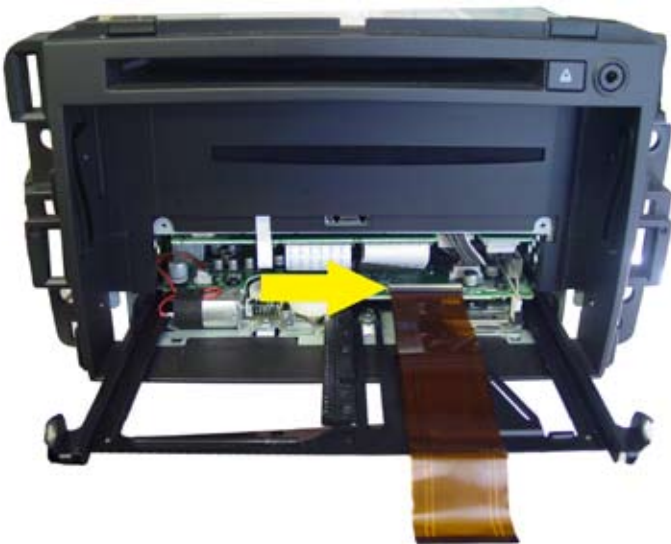
DISCLAIMER: Under no circumstances shall the manufacturer or the distributors of the VCI-GM3 parts be held liable for consequential damages sustained in connection with the VCI-GM3. The manufacturer and its distributors will not, nor will they authorize any representative or any other individual to assume obligation or liability in relation to the VCI-GM3 other than its replacement.



5) Carefully lift up on the release tab and remove the factory ribbon cable.



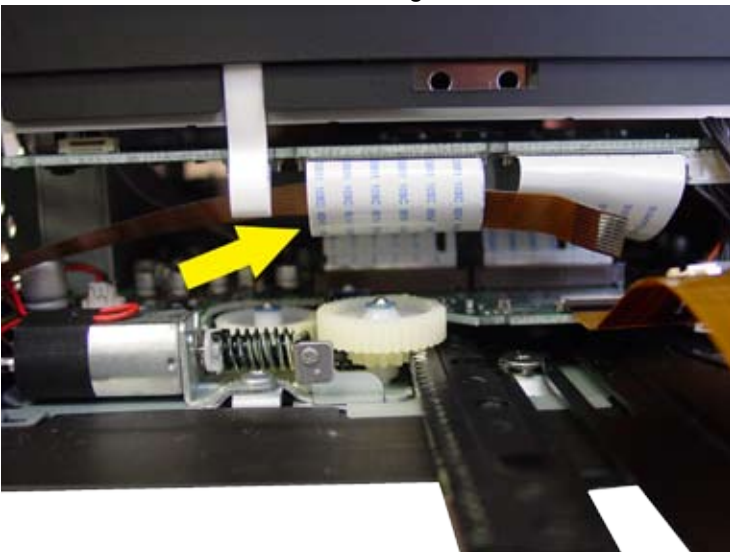
6) Remove the two screws from the center cover. Remove the center cover.



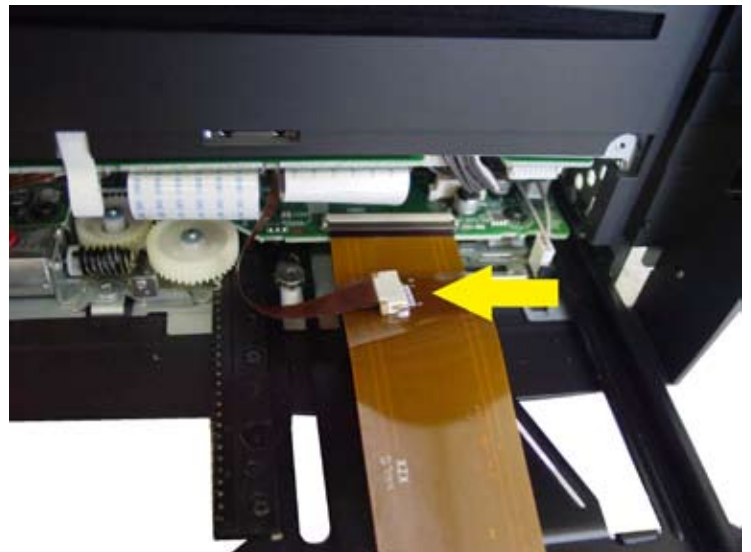
7) Carefully lift up on the release tab and remove the factory ribbon cable and replace with the Ribbon A cable with the small connector closest to the navigation unit.



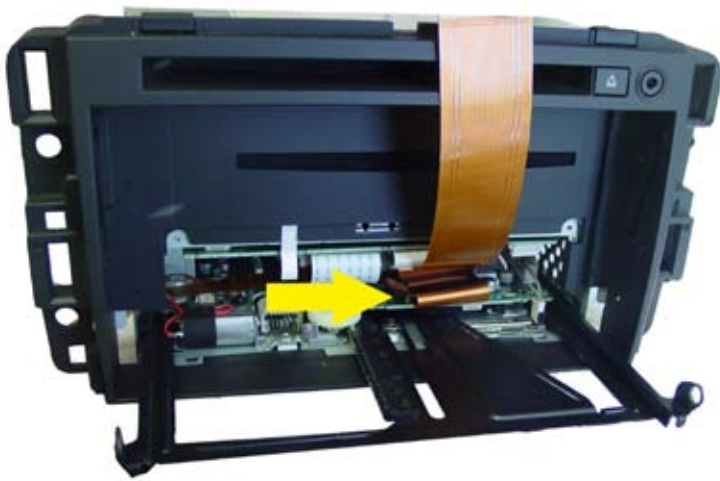
8) Route the RIBBON B cable through the side of the navigation unit with the **contacts facing DOWN**.



9) Route the Ribbon B cable over the large factory white ribbon cable to avoid the gears.



10) Connect the RIBBON B cable to the RIBBON A cable with the **contacts facing UP**. A half twist on the Ribbon B will be necessary for the next step.



11) Carefully fold and insert the Interface ribbon cable inside the navigation unit cavity.



12) Assemble the navigation unit in reverse order of steps.



13) Secure the cable to the bottom of the navigation unit.



14) Connect the VCI-GM3's black power wire to chassis ground. Connect the red wire to the vehicles +12 volt accessory. The power wires are the ones coming out from the DC 12V side of the case. Connect the DB-9 cable to the VCI-GM3. Reinstall the navigation unit and verify operation of the factory navigation unit. Insert the Map Disc.



15) Verify operation of the aftermarket back up camera (and Video 1 input if applicable).

Testing the VCI-GM3:

1. Turn the vehicle and radio on. The radio display should show normal information.
 - * If there is no image on the display, check for correct power connection on the VCI-GM3.
 - * If the image on the display scrolls across the screen, make sure the ribbon cable is seated in the connector correctly.
2. Temporarily put the vehicle into reverse being careful not to back into anything or anyone. The display screen will change to the video back-up camera mode. Put vehicle back to Park and the radio display should show normal information.
 - *If the radio screen information disappears and you get a blank screen when the vehicle is put into reverse, check the video back-up camera for proper power and video cable connection.
 - *The camera must be connected to Video 2 Input.

NOTES:

The factory backup camera (if applicable) will always have priority when in Reverse.

The factory display will always have priority when watching a DVD or AUX in Park.